

Exploring Earth's Surface Notes Review

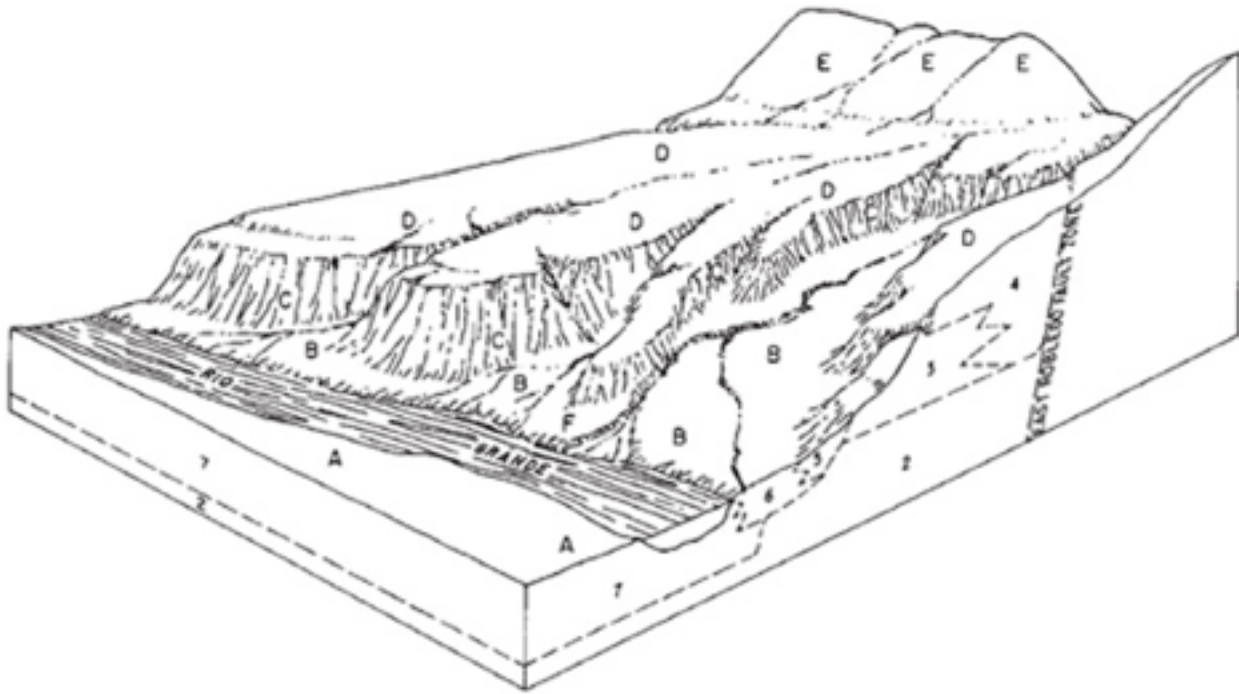
Name: _____ Date: _____

Group: _____ Section: _____



- 1) What is the difference between elevation and relief?
- 2) What is the relief in an area where the highest point is 1,200 meters above sea level and the lowest point is 200 meters above sea level? Give evidence to prove your answer.
- 3) What are the three types of landforms?
- 4) What are the characteristics of Mountains?
- 5) Compare the elevation of a coastal plain to that of an interior plain.

Performance Assessment



In the diagram above, label the following points as either a mountain, plateau, coastal plain, interior plain, high relief, low relief, high elevation or low elevation.

A.

B.

C.

D.

E.